

Emergency Response Water Saving and Drought



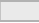
Steve Johnson MSc

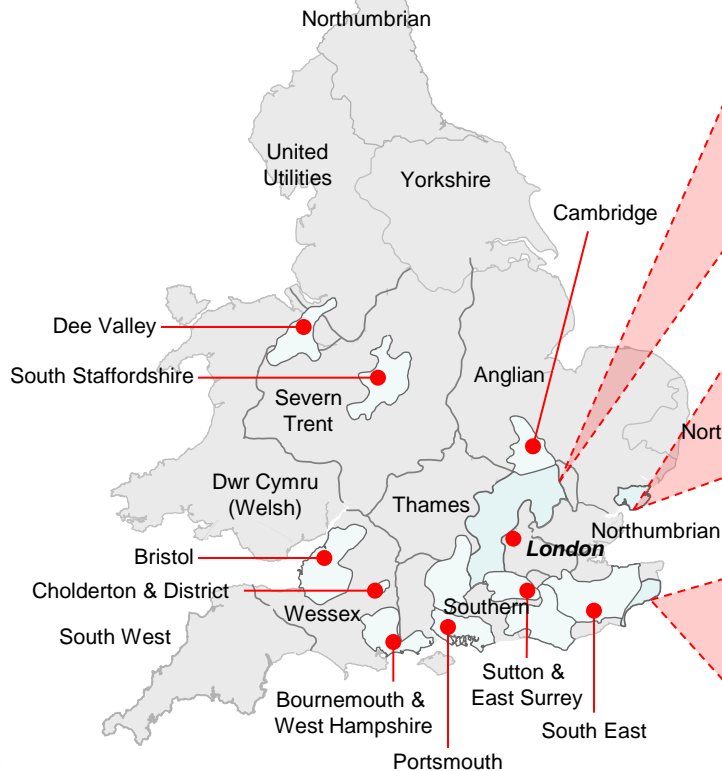
Security & Emergency Planning Manager
Affinity Water

June 2014

Who are we? – Who were we?

Regulated water industry in England and Wales

-  AW Regulated WoC area
-  Other WoC area
-  Water and Sewerage Company (WaSC) area



Affinity Water Central



- Largest Water only Company in England and Wales by revenues
- Supplies a population of c.3.2m
- Typical daily supply - 850 MI/d

Affinity Water East



- Supplies a population of c.160,000
- Typical daily supply - 29 MI/d

Affinity Water Southeast



- Supplies a population of c.160,000
- Typical daily supply - 43MI/d

Plans & Regulation

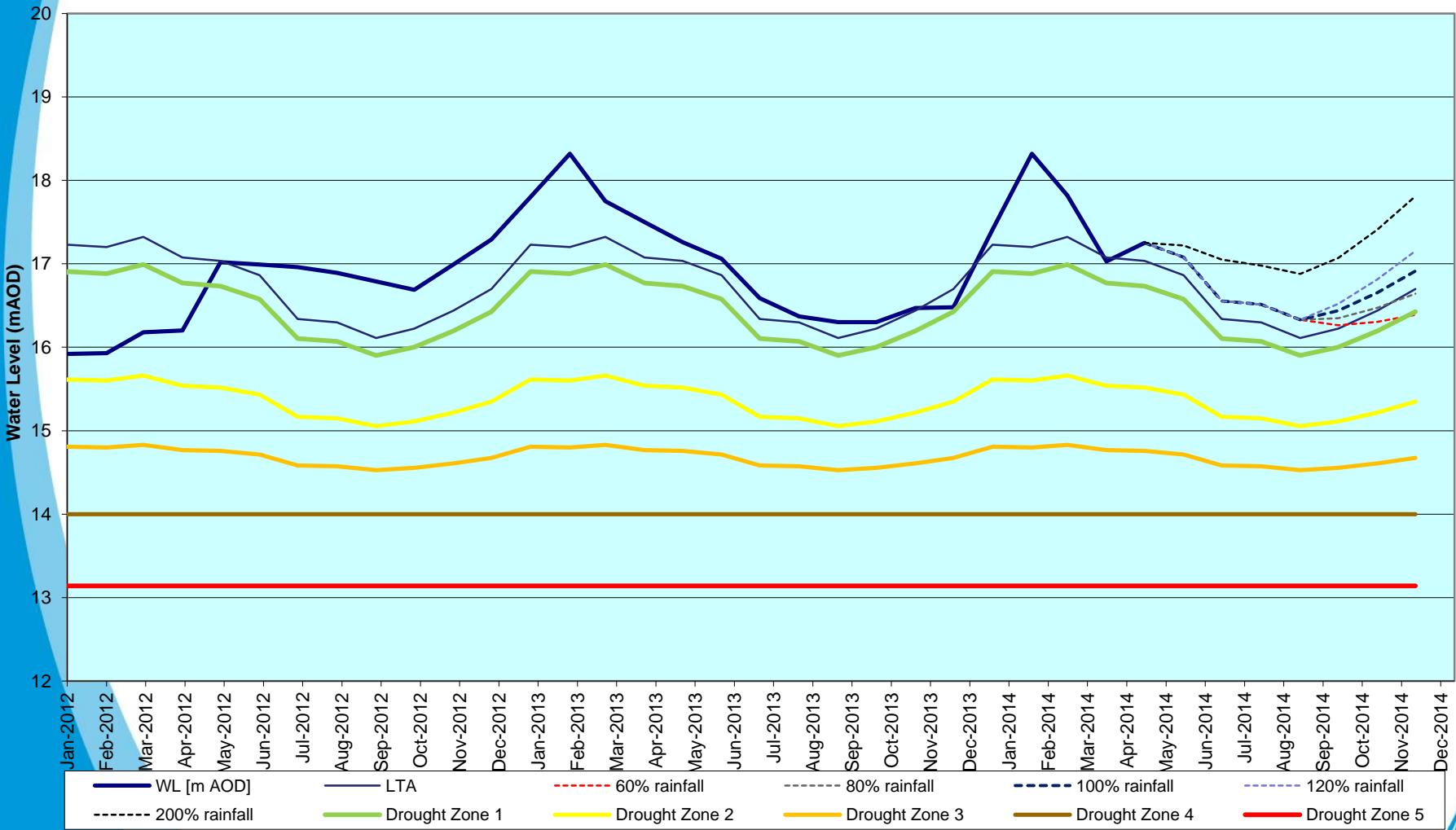
- We have a legal responsibility to supply wholesome drinking water 24/7
- SEMD (Water Act 2003, CCA 2004)
- WRP, Drought Plan, WCLRP, EP, BCP etc
- We must maintain our legal responsibilities even in a drought
- DEFRA, DWI, EA, CPNI, CCW, CCG, OFWAT

Drought Management Plans

- Our drought Management Plan sets out how we deal with droughts
- Our stated level of service is 1 in 10 years
- Plans are updated annually and subject to public consultation every three years
- Drought trigger points 1, 2, 3, 4 & 5 results in actions from raising awareness – through TUB – to EDO

Drought Trigger Predictions March 2012

AW East Region Groundwater Drought Triggers at Lady Lane OBH



In this section

Water pressure

Stop taps

Rob shows you how guides

Water quality

Water efficiency

Water efficiency products

Water butts

How much water do you use?

Water Audit

Saving water in the home

Saving water in the garden

Doing our bit

The water efficient house

Water Resources

Drainage and standing water

Fittings regulations

Useful links

Got a question?



Find answers to questions our customers are asking

Save water, save energy, save money

Did you know we use more water than any other part of the country, but get less rain? That's why our water is precious and we should use it wisely. Saving water not only makes environmental sense but it can help save energy and reduce your bills.

Click the links below for free and discounted devices to help you start saving

Click to order a free water saving device

Click to order a water butt

How to check for leaks in your home

Apply for a water meter

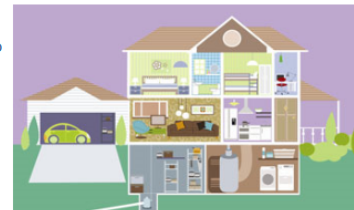
Can we help reduce your water bill?

Learning opportunities for schools

Try our Water and Energy calculator for your home

Saving water can be easy

- Explore our **water efficient house** for simple ways to save water at home.
- Complete a **water audit** to monitor your household consumption
- Check out some fantastic **water saving ideas and products** we have on offer.
- Catch every drop and recycle it with a **water butt**
- Save up to 2.5 litres with every flush with a **water displacement device** (Hippo or SAF)



Devices for Toilets

- Not suitable for dual flush toilets
- Save-a-Flush
 - Saves 1.2 litres of water with every flush
 - Suitable for more modern single flush cisterns
 - Just lift cistern lid and drop in!
- Save up to 5,000 litres of water per year



Devices for Showers & Taps

- Not suitable for electric showers
- Shower Regulator
 - Regulates flow of water - saves up to 8,000 litres of water per year
- Shower Head
 - Eco shower head - saves up to 8,000 litres a year
- Tap Aerators
 - Regulates flow to 5l/min - saves up to 6,500 litres of water per year



Visit our Free Device webpage!

Devices delivered directly to your home address:

Step 1: www.affinitywater.co.uk/savewater

Step 2: “Click to order a free water saving device” button



Devices for children:

- Tooth Timers: Encouraging 2min brushing while turning the tap off
- Bath Buoys: Inflatable accessory saving 30litres every time the little one bathes



Affinity Water

Any Questions?

