



Funded by  
UK Government

# MILTON ROAD & VICTORIA STREET DOVERCOURT

## CONTEXT

MILTON ROAD & VICTORIA STREET



**DOVERCOURT  
STATION**

**VICTORIA STREET  
SITE 1**

**FORMER  
VICTORIA HOTEL  
SITE 2**

**DOVERCOURT  
PUBLIC REALM  
DEVELOPMENTS  
IMPROVEMENTS  
TO KINGSWAY**

**MILTON ROAD  
SITE 3**





Funded by  
UK Government

# MILTON ROAD & VICTORIA STREET DOVERCOURT SITE ANALYSIS

VICTORIA STREET



Aerial View

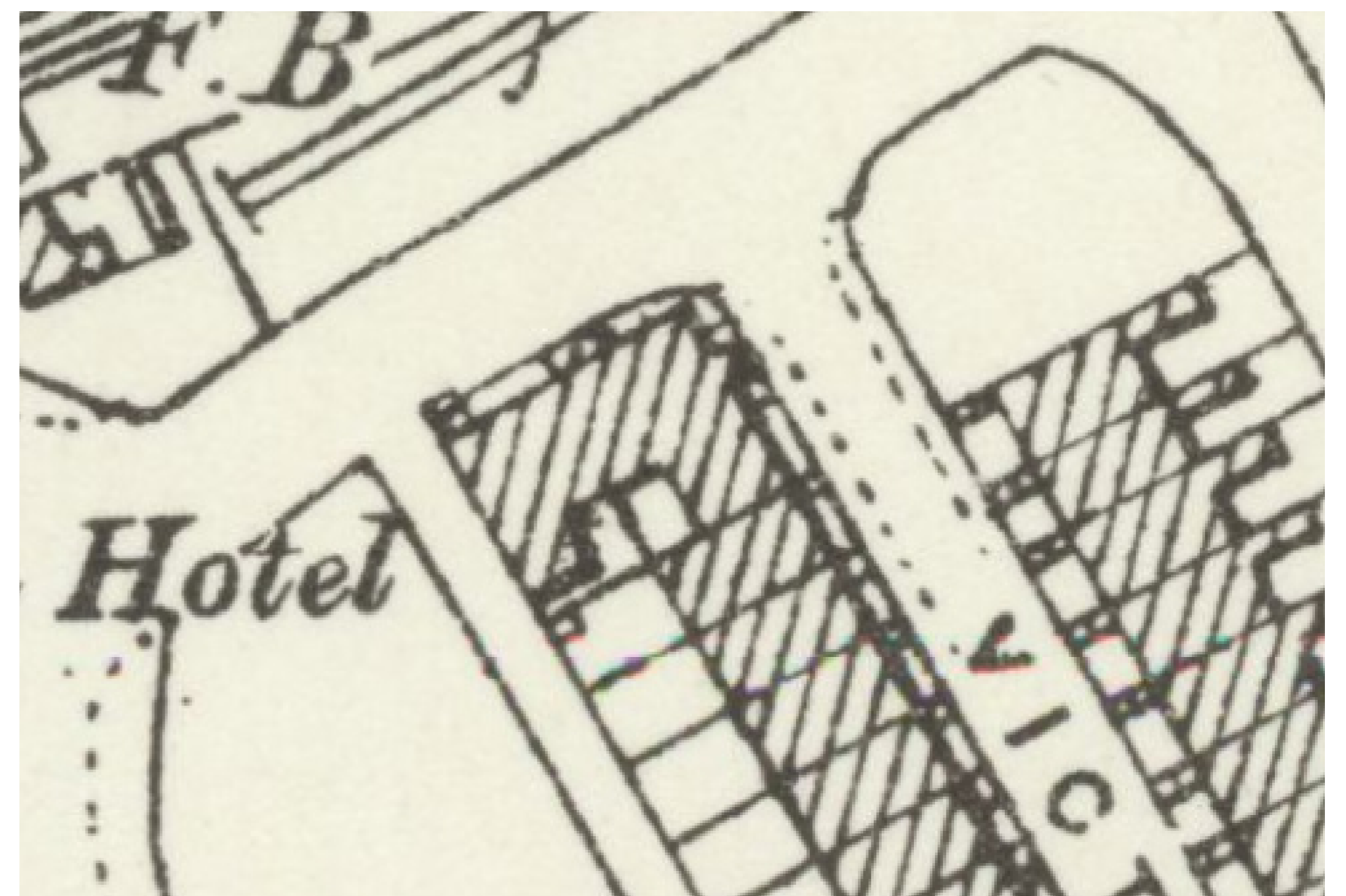


Site Analysis

## Victoria Street Sites

The proposal is to clear these two sites and create a complimentary development of residential buildings in keeping with local character providing 9-12 units combined on both sites.

The development will be delivered via traditional building methods.



Historic Plan

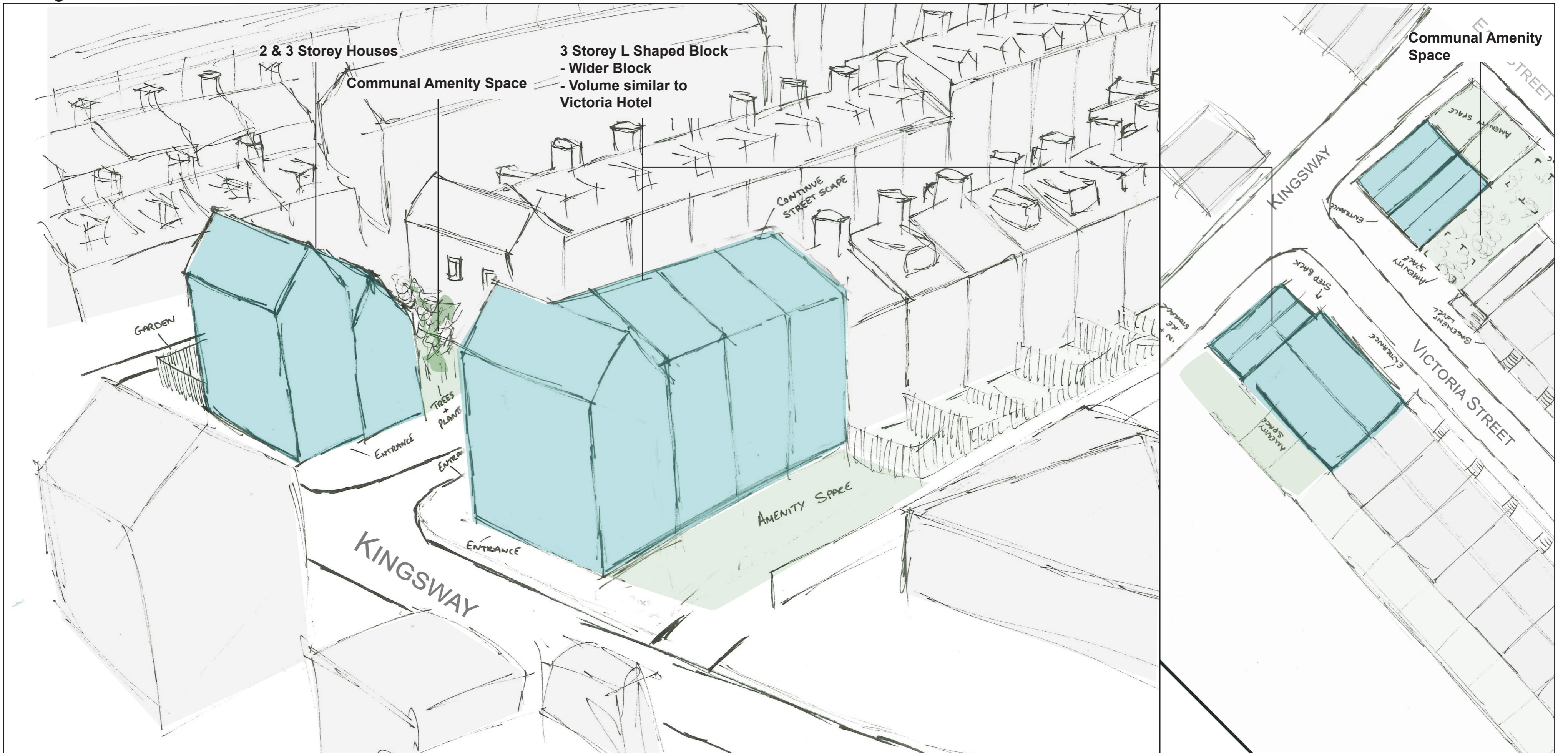




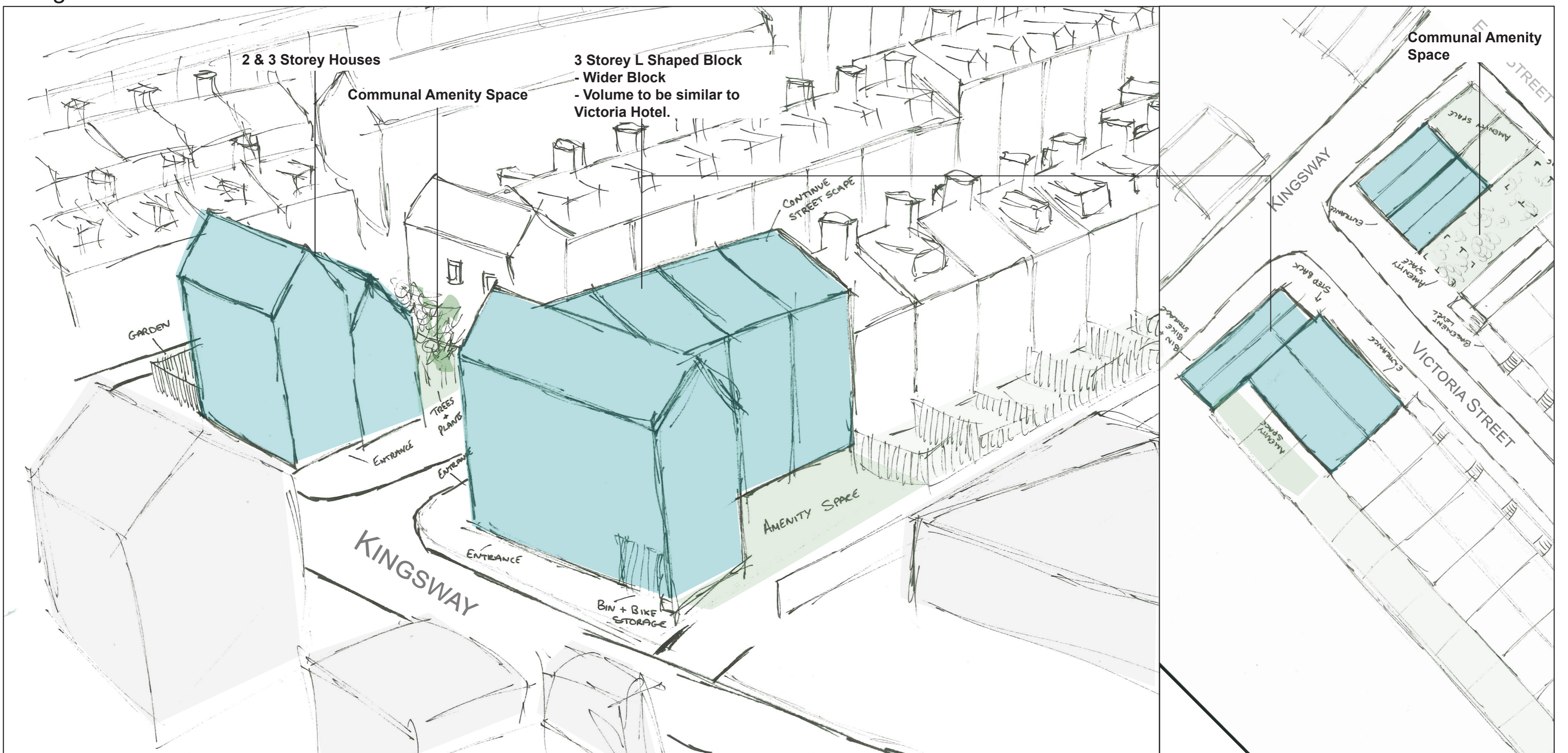
Funded by  
UK Government

# MILTON ROAD & VICTORIA STREET DOVERCOURT EXPERIMENTAL STUDIES VICTORIA STREET

Design Sketch 1



Design Sketch 2





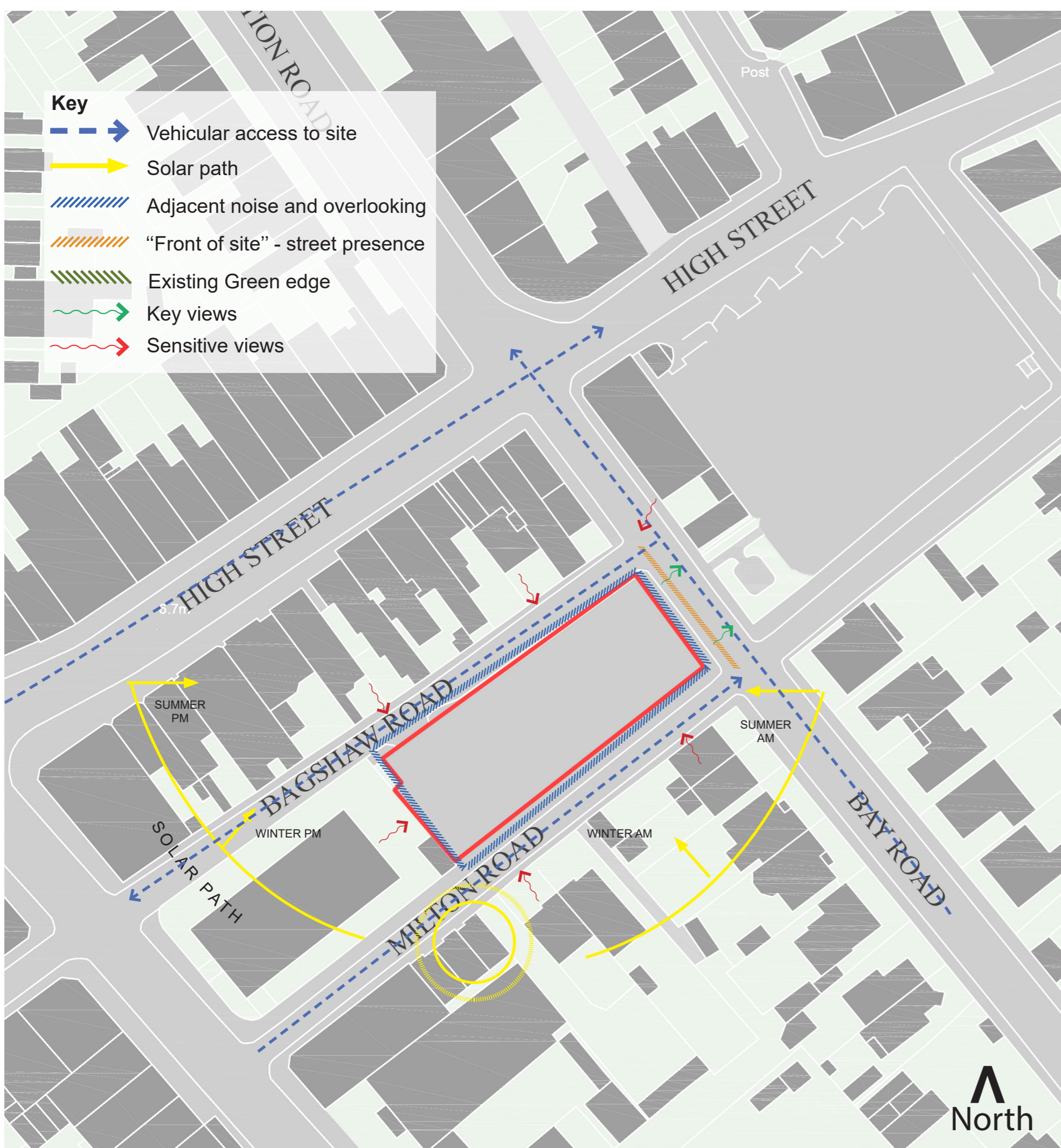
Funded by  
UK Government

# MILTON ROAD & VICTORIA STREET DOVERCOURT SITE ANALYSIS

MILTON ROAD



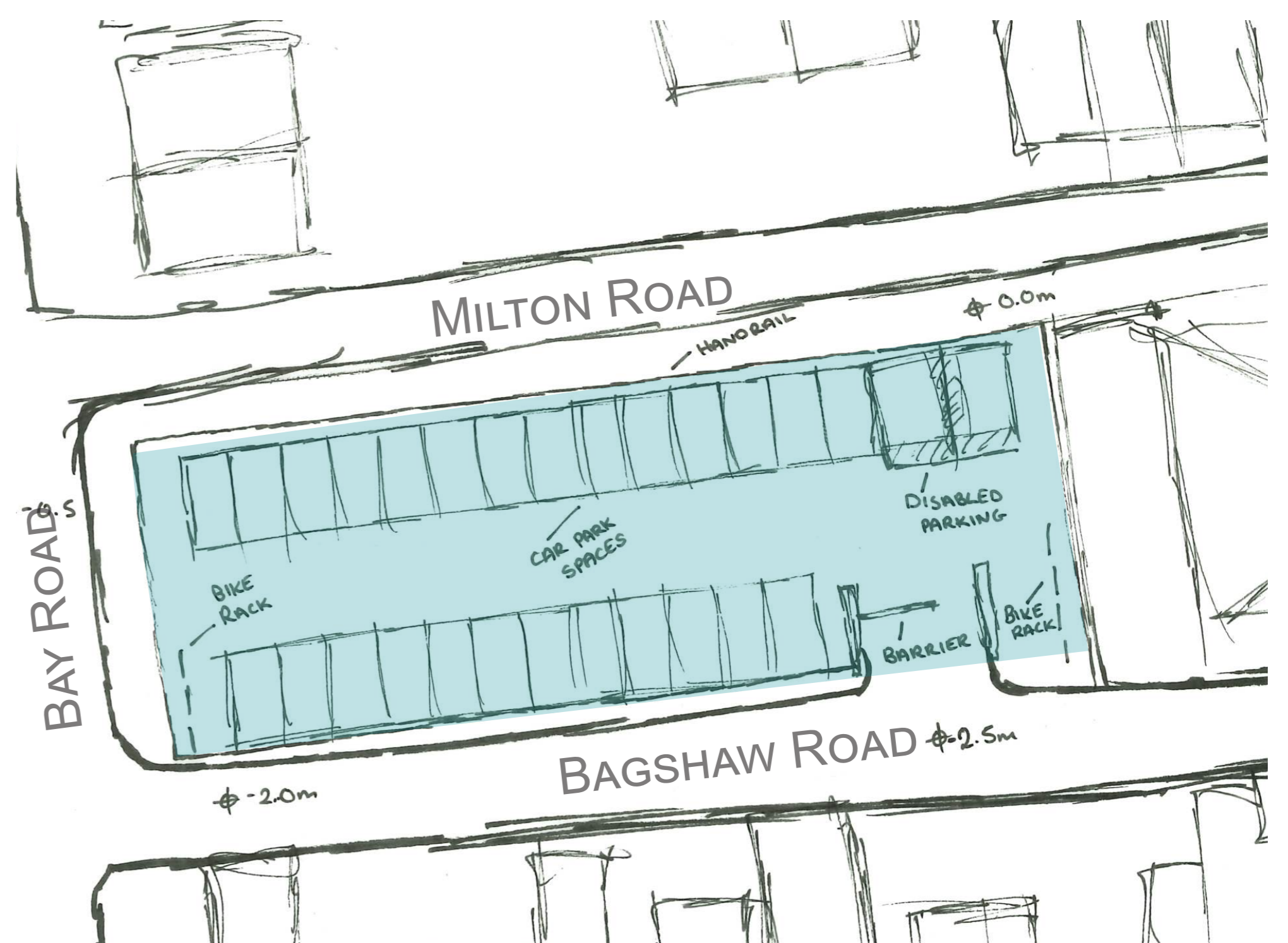
Aerial View



Site Analysis

## Milton Road

The proposal is to demolish the existing outdated car park and create new surface level parking in the town centre. Improved lighting and new landscaping will be included.



Design Sketch

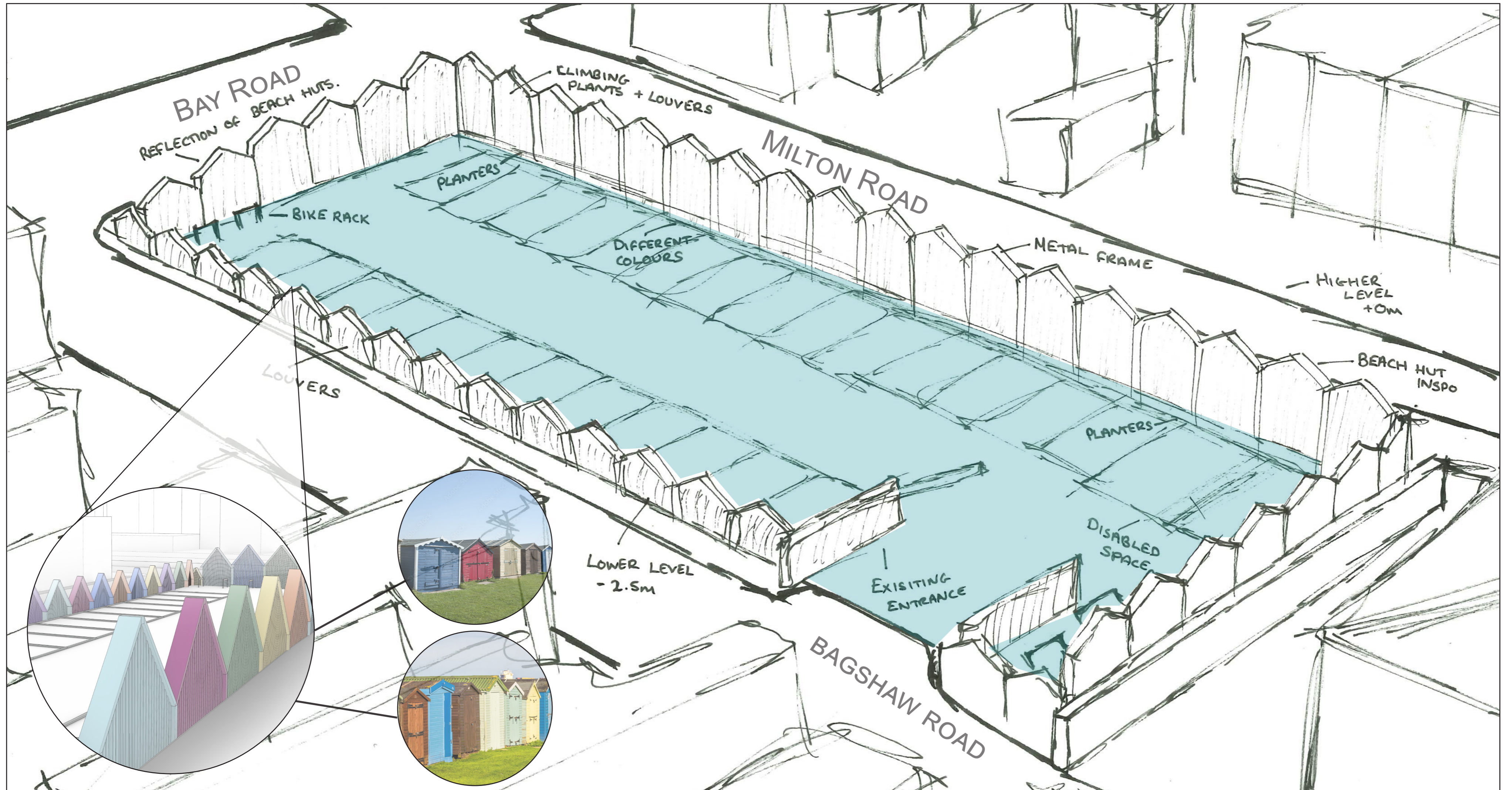




Funded by  
UK Government

# MILTON ROAD & VICTORIA STREET DOVERCOURT EXPERIMENTAL STUDIES MILTON ROAD

Coloured Metal Screens - Beach hut inspired profile



Metal Box planters - Forming edge screening

