



Funded by
UK Government

Milton Road & Victoria Street Dovercourt

Background

Introduction

Tendring District Council have been successful in securing Government funding for the Dovercourt Town Centre Improvement Corridor.

The redevelopment of the Milton Road and Victoria Street sites form part of this Capital Regeneration Project.

Timeline

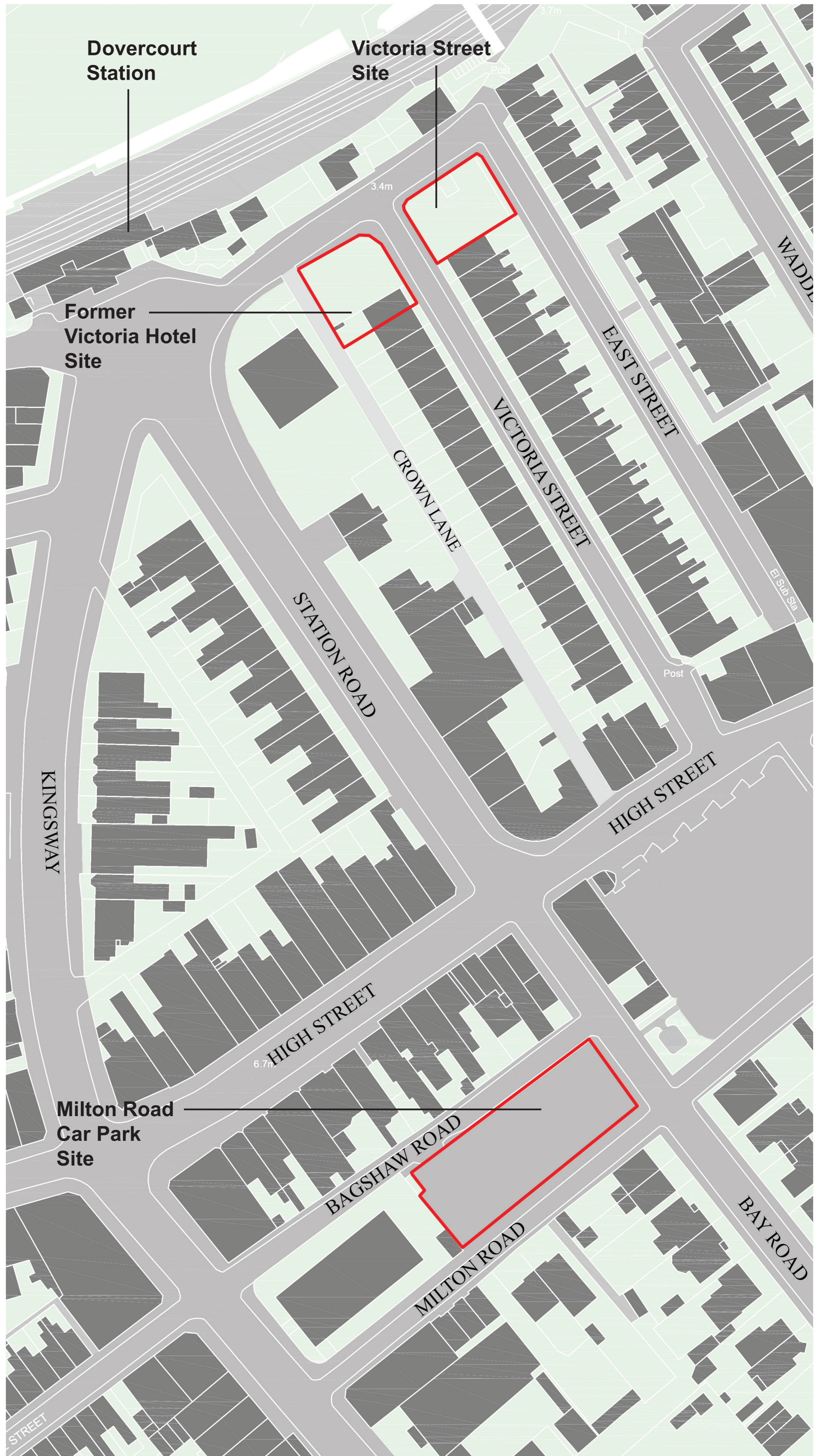
Following this public consultation today the intention is to submit 2 separate planning applications as follows:

Milton Road Car Park Site

End of October 2024

Victoria Street Site

November 2024





Funded by
UK Government

Milton Road & Victoria Street Dovercourt

Your Feedback

Feedback from Public Consultation held 17th July 2024

Memories of Victoria Hotel pub

What you said:

- Design was liked
- A building with character
- Architecture blended in with the rest of the street

What we have done:

- Developed a design in more detail
- Used the built form of the former pub as inspiration
- Looked the Victoria Street area to inspire our design

The empty Victoria Street site

What you said:

- Overgrown and an eyesore
- An antisocial dumping ground
- Dangerous

What we have done:

- Clear the site
- Make it safe
- Developed a design for much needed affordable housing

The car park

What you said:

- Needs improved appearance, landscaping and access
- Existing car park is dark and dangerous
- Make sure parking spaces are big enough
- Events held at Orwell Place occupy parking spaces
- Provide smarter railings

What we have done:

- Designed a new car park with planting, trees, boundary treatments and pedestrian entrances
- Upper deck will be removed to create an open and unenclosed space
- Parking bays will be 2.6m wide x 5.0m long
- New car park will provide much needed parking in the town centre
- Railings design is inspired by local Dovercourt features





Funded by UK Government

Milton Road & Victoria Street Dovercourt

Victoria Street



Site Analysis



Aerial View

The proposal is to clear these two sites including demolishing the derelict no. 20 Victoria Street and create a complimentary development of a block of flats in keeping with local character providing 8 dwellings - a mix of 1 and 3 bedroom flats on the former Victoria Hotel site



Inspiration: Victoria Hotel height, bulk and massing



Inspiration: Victoria Street brick colours and details



Proposed Site Plan





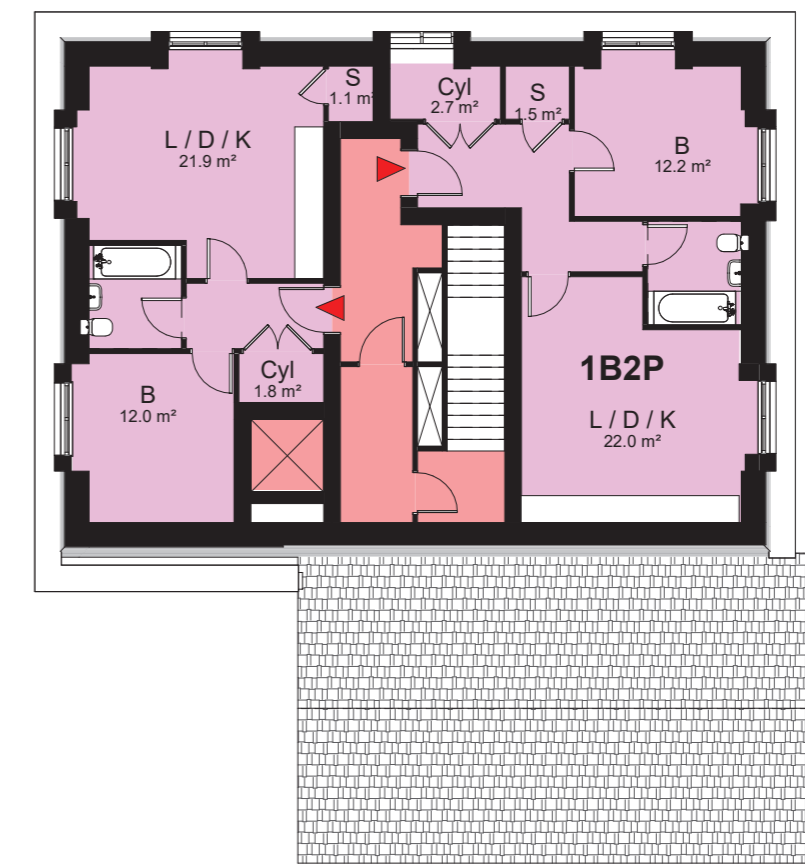
Funded by
UK Government

Milton Road & Victoria Street Dovercourt

Victoria Street



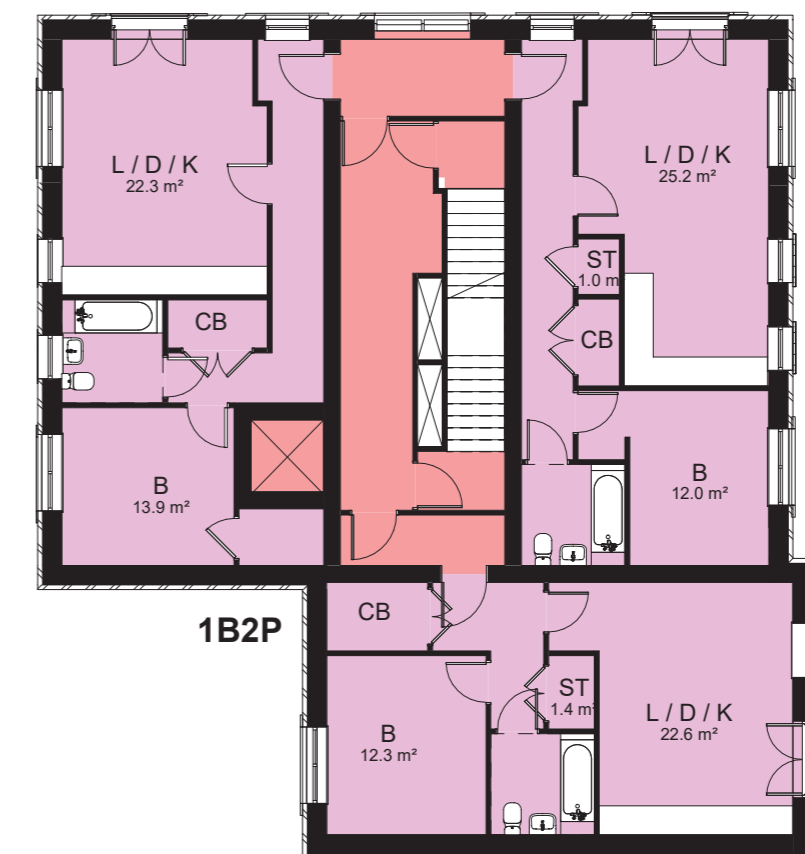
Approach from Dovercourt Station



Third Floor Plan



North Frontage and Crown Lane



Second Floor Plan



North Frontage and Victoria Street



First Floor Plan



Victoria Street Frontage



Ground Floor Plan





Funded by
UK Government

Milton Road & Victoria Street Dovercourt

Milton Road



Site Analysis



Aerial View



Proposed Layout

Milton Road
The proposal is to demolish the existing outdated car park and create new surface level parking in the town centre. Improved lighting and new landscaping will be included. The design of new railings will reflect Dovercourt's own identity and history

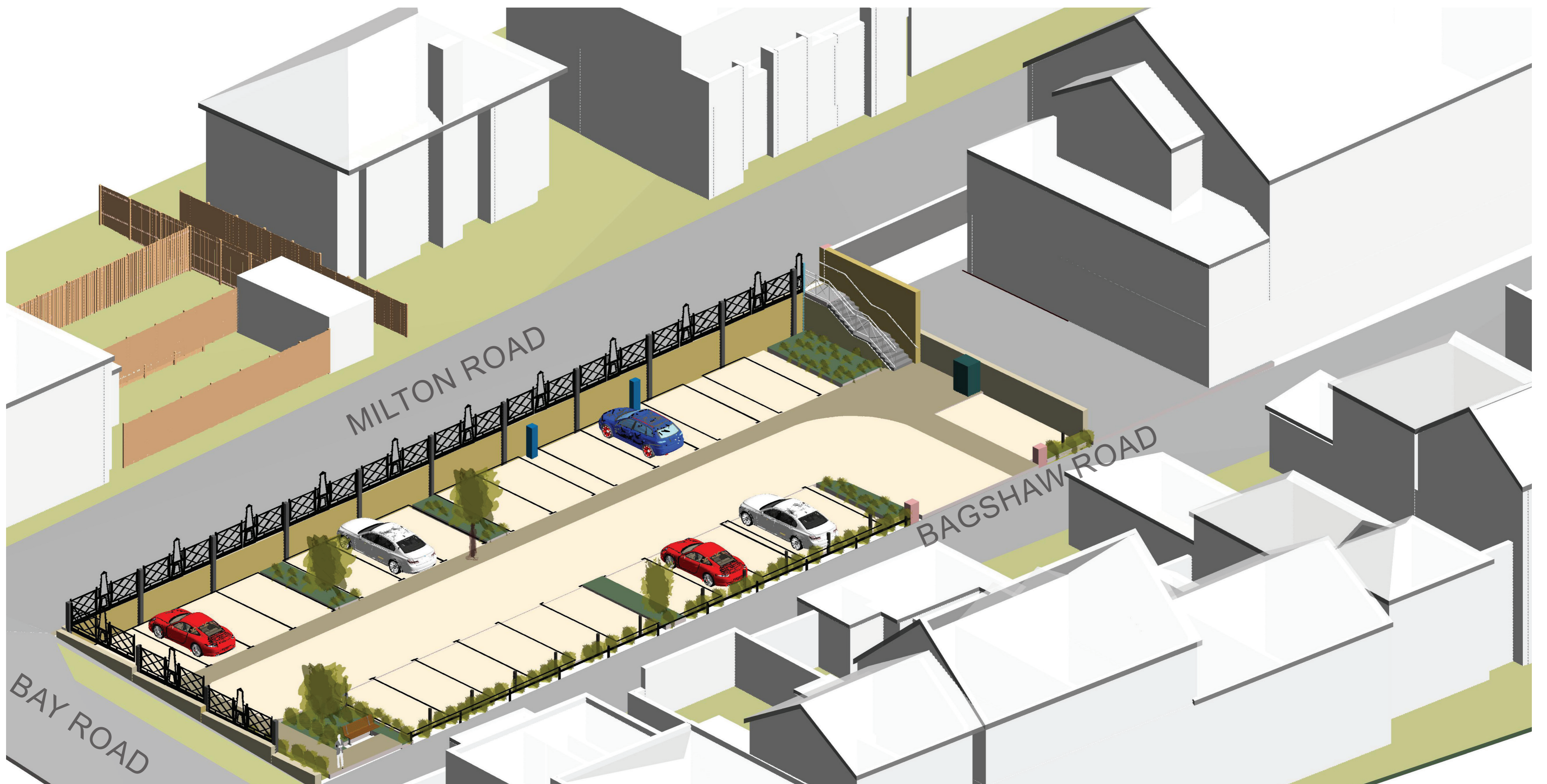




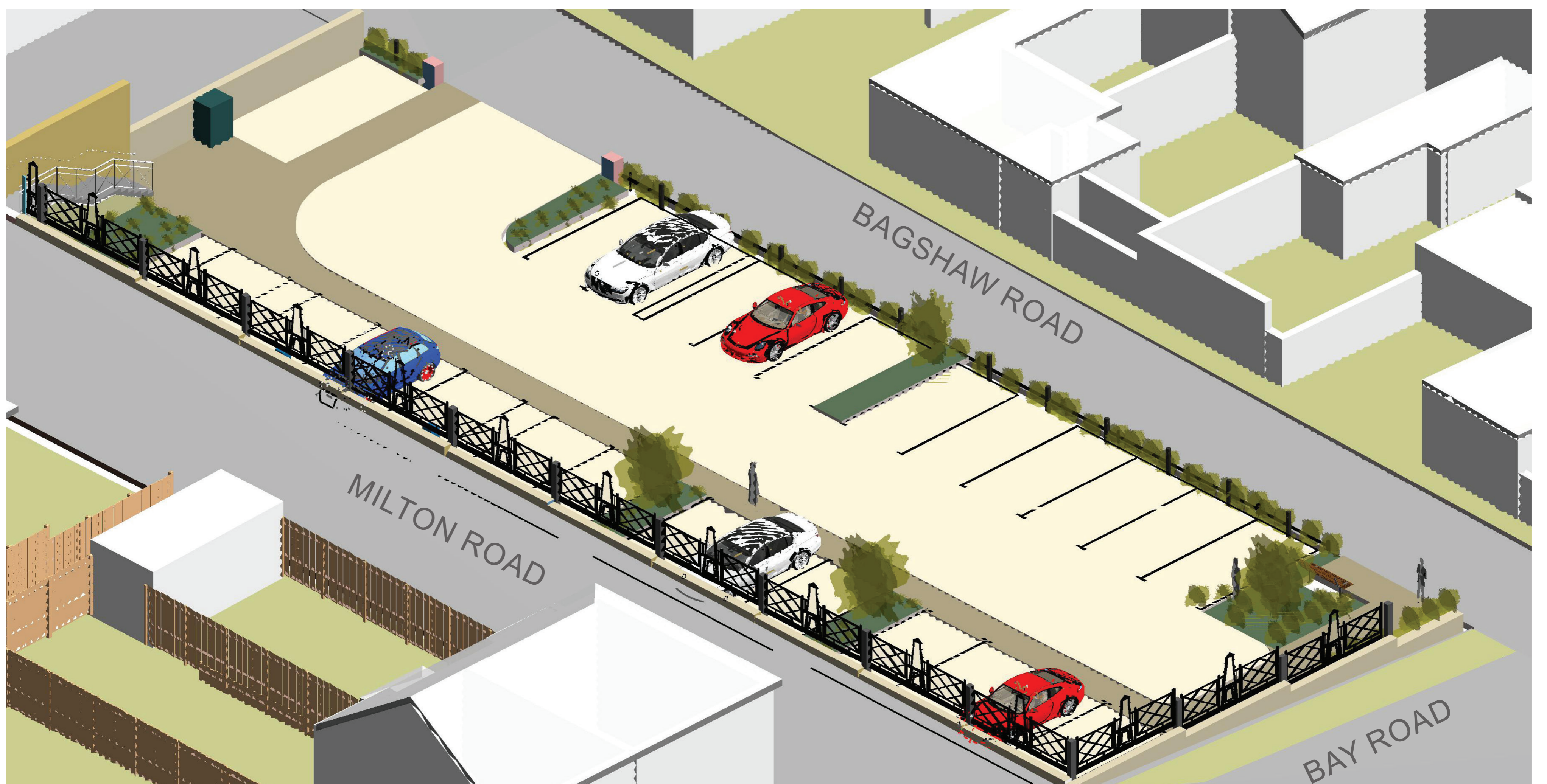
Funded by
UK Government

Milton Road & Victoria Street Dovercourt

Milton Road



Aerial View from North-East



Aerial View from South-East





Funded by
UK Government

Milton Road & Victoria Street Dovercourt

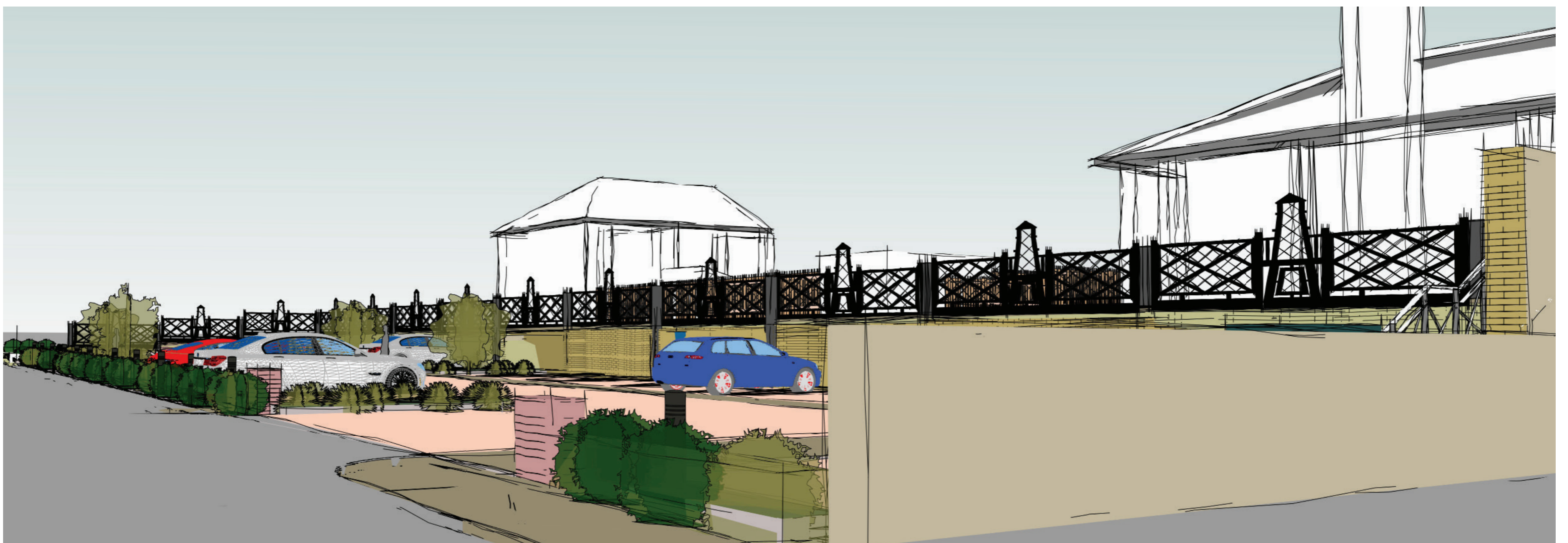
Milton Road



Local Inspiration: Dovercourt Lighthouses



Local Inspiration: Railings at Orwell Terrace and Redoubt Fort



View of corner of Bay Road and Bagshaw Road



View along Bagshaw Road - Car Park Entrance

