

Clacton and Holland on Sea Coast Protection Scheme



We have now removed all but one of the old groynes from the Gunfleet Boating Club to Fernwood Avenue.



The remaining Groyne (groyne 10) will be removed in November.

What are we telling you about?

Latest update on progress for the £36million Clacton and Holland on Sea Coast Protection Scheme.

What have we done so far?

To date fishtail groynes FT23, FT22, FT21 and FT20 have been completed and work is progressing with Groynes FT 19, FT18, FT17 and FT16.



Rock has been and will continue to be delivered on this section of the beach during high tides when weather conditions permit.

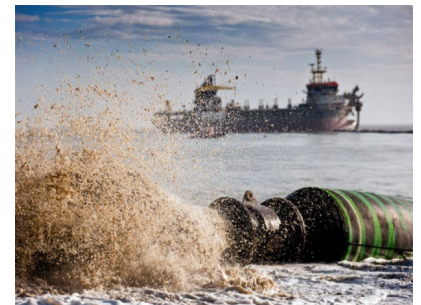


Groyne construction takes place at low water and should be complete by December.

What will we be doing next?

The main beach recharge is programmed to start during November.

A 800mm diameter sinker pipe will be used to deliver the recharge material from the dredging vessel "Causeway" which will connect to the end of the pipe approx. 700m offshore.



The "Causeway" will deliver beach material up to four times a day. It will place approximately 62,500 m³ of material a week, which will fill up one bay.

Once a bay has been filled the pipe will be repositioned into the next bay.



Following the completion of the bays the navigation markers will be placed on the ends of specific groynes.

When the above is complete the Phase 1 works will be handed over to Tendring District Council and opened to the public. This is expected to be January 2015.

Some interesting facts

Approximately 60,000m³ of sand/shingle, which forms the base of each groyne, has been delivered to date.

A total of 950,000m³ of beach material will be required over the whole project.



To date 19 vessels have brought approximately 87,000 tonnes rocks to the site from a quarry in Norway.



A total of 350,000 tonnes of rock will be required for the scheme.

Each groyne takes about 2 weeks to complete.

Phase 2 is programmed to start in early spring 2015 and the remaining fifteen fishtail groynes are planned to be completed in autumn 2015.

Noise and vibration monitoring is ongoing and has not exceeded any thresholds.

When can you use the promenade?

The lower promenade and beach are fully closed from Gunfleet Boating Club to Fernwood Avenue. Closures of the promenade are necessary as rock works progress and the beach recharge takes place.

A small area of promenade is open at Holland Gap to allow public access to the kiosk.

When is work taking place?

November, December and January
Rock delivery, groyne construction (groynes FT19, FT18, FT17 & FT16) and main beach recharge.

March — October 2015
Construction of Phase 2

Work is subject to weather and sea conditions

To ensure safety at all times, large sections of beach and promenade will remain closed until the work is completed and it is safe to open

Where can I get more information?

The Visitor Centre is located next to the Clacton Sailing Club at Holland Haven

Opening times are currently under review. Please see notice at visitor centre.



Alternatively to find the latest information visit the TDC website www.tendingdc.gov.uk where regular updates of the works can be found and you can view progress via the time lapse video camera.

Click on the "latest information" image as shown on the right:



Contact:

Clactoncoast@mottmac.com

07733 776677

(Monday to Friday 9am – 5pm only)

If you would like this factsheet in larger print or another format please do let us know

