

Clacton and Holland on Sea Coast Protection Scheme



4th July 2015



What are we telling you about?

The new £36 million Clacton and Holland on Sea Coast Protection Scheme.

Phase 2 works commenced 2nd March 2015 and 15 new groynes were completed by the end of June.

Three new beaches near the Pier were opened on 3rd July, a further four beaches on 11th August and three on 19th August.



The remaining six beaches will be completed by end of September 2015 by which time, 23 beaches will have been created which can be enjoyed at all states of the tide.



Some facts and figures

Phase 1 works commenced 22nd July 2014. Eight new groynes were constructed and seven new beaches were completed and were opened to the public 6 months later on January 24th 2015.



By the time the scheme is finished 950,000m³ of recharge material will have been pumped ashore and 270,000 tonnes of rock, from a quarry in Norway, will have been delivered by 61 vessel round trips.



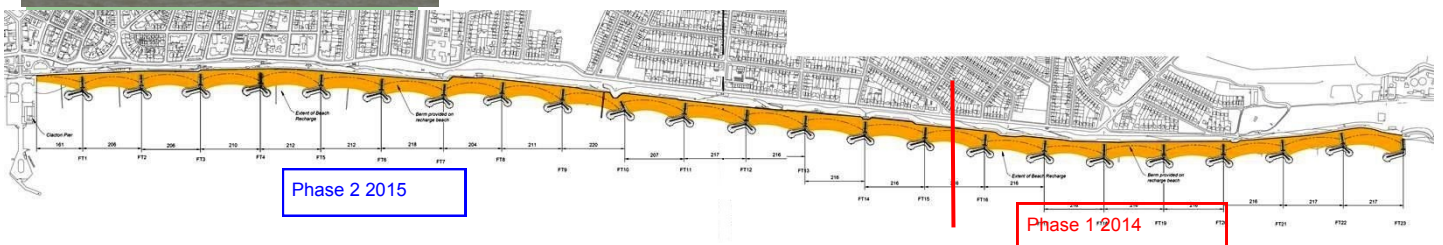
There will have been more than 22,000 "views" on the latest information page on the TDC web-site. Over 16,000 visitors will have called at the Visitor Centre and more than 17,000 information leaflets will have been distributed.

Who is funding the scheme?

The Environment Agency in partnership with Tendring District Council and Essex County Council.

Who designed and carried out the work?

The project was designed and managed by Mott MacDonald. Construction carried out by VBA Joint Ventures Ltd



How did we get started?

There has been a lot of background work over several years to get this major coast protection scheme off the ground. The various options were submitted to the Environment Agency for appraisal.

Physical modelling was carried out to test the chosen design to its limits.



It was finally signed off by the Environment Agency in September 2013 and planning consent was granted in January 2014.



Bore hole tests were carried out and all necessary licences were obtained.

Contractors and project managers tendered and were selected for the scheme.

Public consultations were held.

Why did we do the work?

We have lost a substantial amount of the beach along the Clacton to Holland on Sea frontage, which is an important facility for residents, visitors and for the local economy.



More than 3,000 properties were at serious risk from erosion by the sea over the next 100 years.

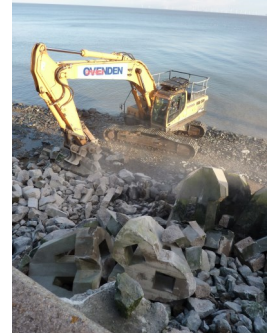
This scheme now provides beaches along the 5km stretch protecting the cliff and promenades and together with the rock groynes will combat the effects of coastal erosion and protect homes and businesses. This will be of benefit to both residents and visitors

and will encourage greater use of the frontage.

It will create opportunities which will make Tendring an even better place to live, work, visit and invest.

Recycling and saving

Much of the concrete material from the old coastal defences has been reused within the scheme, thus making considerable savings on the quantity of rock imported from Norway.



Wood from the old timber groynes has been stored and will be re-used elsewhere when carrying out routine maintenance.

Where can I get more information?

The Visitor Centre, is on the greensward opposite Hazlemere Road and is open daily until 18th September when it will finally close.



Please see notice at centre for current opening times.

Visit www.tendringdc.gov.uk where regular weekly updates of the works can be found and you can view the scheme via the time lapse video.

Click on the "latest Information" image as shown on the right



Contact:

Clactoncoast@mottmac.com

07733 776677

Monday—Friday 9am—5pm

If you would like this factsheet in larger print or another format please do let us know