

# The common rat

Widely distributed in both town and country areas the common rat can be found where there is a source of food, water and somewhere to nest. They are often associated with the sewer system where they escape from broken pipes or uncapped drains. They will burrow into hedgerows, compost heaps and under garden sheds where they will make their nests.

If they get into your home, common places that they can be found are roof spaces, inside cavity walls and under floors. Rats tend to be mainly nocturnal but can be seen during the day searching for food or moving nests.

## Why should we control rats?

As the common rat lives close to humans in areas like drains and around rubbish, not only do they cause fear in many people they also have the potential to spread disease, including salmonella and Weil's disease. Rats can also cause structural damage and gnaw plastic coated electricity cables.

## How do I know if I have rats?

- The first indications of a rat infestation are; sightings of rats
- Damage to property from gnawing
- Finding of droppings
- Holes appearing in the ground

# How are rats controlled?

Once an infestation has been identified then it is usually treated by the use of either traps or poisons (rodenticides.) Traps are useful if there are only one or two rats. Poisons are much more effective at controlling infestations.

Although not legally obliged to, we offer a free service if you receive Council Tax or Housing benefit, due to the potential health risks for domestic dwellings in this district. For all other Tending residents, pest control treatment is carried out by our fully qualified contractors, for a nominal charge.

The rodenticides used are the safest available and do not pose any risk to people unless taken deliberately. Bait is only left in areas where it is safe to do so away from domestic pets and is never laid in areas open to the public.

## What is the law?

The Prevention of Damage by Pests Act 1949 places an obligation on landowners to control rats on their property. The control of rats is therefore everyone's responsibility. Where there is a property or rubbish, which is providing shelter (harbourage) and food for rats the Council may also take enforcement action to ensure control measures are carried out.

# What else can I do to stop a rat problem?

- Do not leave any food waste out overnight.
- Keep all household rubbish in a bin with the lid firmly shut.
- Do not allow rubbish to accumulate in your garden.
- Repair any fault drains as soon as possible.
- If you feed pets outside pick up excess food.
- If you feed birds in your garden use a bird table or feeder and do not leave loose or split food out overnight.
- Ensure that any gaps are sealed where pipes come through the walls of your property.
- If you have a compost heap position it on a hard surface, which will allow the liquids to drain away such as open jointed bricks, paving slabs or a fine steel mesh.
- Secure any gaps beneath your external buildings such as sheds or garages with galvanised wire mesh.

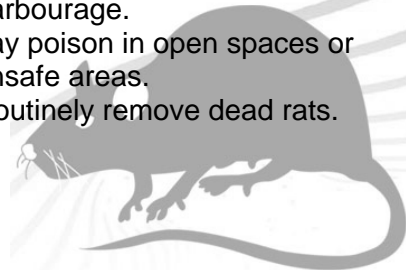
If after taking the above steps you still have a problem or if you are concerned that a neighbour's property/land is in such a state which is attracting rats i.e. large amounts of domestic waste which have been allowed to accumulate, or defective drains you should contact us on the numbers on the back of this leaflet.

# What will we do?

- Contact you within 5 working days to discuss your complaint.
- If necessary arrange a site visit to assess the problem.
- Keep you informed of the progress of your complaint.
- Provide advice on structural work that may be required to help you solve the problem.
- If there is a major infestation liaise with Anglian Water to ensure that the public sewers are baited in your area.
- If necessary take enforcement action where satisfied that a property is in such a state that it is attracting large numbers of rats.

# We will not:

- Investigate complaints of individual rat sightings unless there is something in the area, which is attracting rat's i.e. a food source of harbourage.
- Lay poison in open spaces or unsafe areas.
- Routinely remove dead rats.



## CONTACT INFORMATION

**Tendring District Council  
Pollution and Environment  
Environmental Services  
Council Offices  
Thorpe Road  
Weeley  
Essex  
CO16 9AJ**

**Tel- (01255) 686767**

**Fax- (01255) 686404**

**Email-**

**[environmental.services@tendringdc.gov.uk](mailto:environmental.services@tendringdc.gov.uk)**

**[www.tendringdc.gov.uk](http://www.tendringdc.gov.uk)**

**To arrange for a Pest Control  
Officer to visit – Please call  
them directly on 01255 433999.**

### **BENGALI**

যদি আপনার এই নথিটি বাংলা ভাষায় প্রয়োজন হয়, তাহলে [www.Tendringdc.gov.uk](http://www.Tendringdc.gov.uk) এর মাধ্যমে অনুবাদ করে দেওয়ার জন্য অনুরোধ করা যেতে পারে।

### **CHINESE**

如果你需要这份文件的简体中文翻译, 可以通过[www.Tendringdc.gov.uk](http://www.Tendringdc.gov.uk)订购。

### **GUJERATI**

જો આ દસ્તાવેજ તમને ગુજરાતીમાં જોઈવું હોય તો [www.Tendringdc.gov.uk](http://www.Tendringdc.gov.uk) થકી એનું ભાષાંતર ખરીદી શકાય છે.

### **HINDI**

यदि आप इस दस्तावेज को हिन्दी में चाहते हैं, तो [www.Tendringdc.gov.uk](http://www.Tendringdc.gov.uk) के माध्यम से अनुवाद का ऑर्डर दिया जा सकता है।

### **POLISH**

Jeśli potrzebujesz ten dokument w J. Polskim, tłumaczenie może być zleczone na stronie [www.Tendringdc.gov.uk](http://www.Tendringdc.gov.uk)

### **TURKISH**

Eğer bu dokümanı Türkçe olarak istiyorsanız, çeviri [www.Tendringdc.gov.uk](http://www.Tendringdc.gov.uk) yolu ile düzenlenebilir.

### **URDU**

اگر آپ کو اس دستاویز کی ضرورت اردو میں ہے تو [www.Tendringdc.gov.uk](http://www.Tendringdc.gov.uk) کے ذریعے اس کے ترجمہ کی فرمائش کی جا سکتی ہے

**Tendring  
District Council**



# Rats

## Guidance for Householders



The number of rats is increasing and it is important that we all take steps to ensure that our homes, garden and local environment are kept free from rats.

This leaflet is aimed at advising residents on steps they can take to prevent rats entering their properties and action that the Council can take to prevent infestations.