

ABOUT THE TRAIL

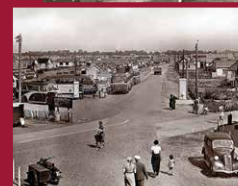
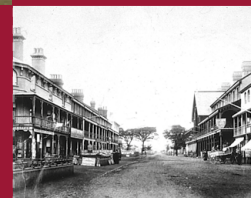
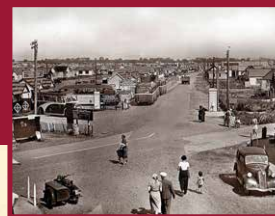
The Clacton Heritage Trail celebrates Clacton-on-Sea's 150th Birthday.

The National Lottery Heritage Fund (NLHF) using money raised through the National Lottery, have funded this new seafront heritage trail in Tendring, from Jaywick Sands to Holland Haven and incorporating Clacton town centre, to celebrate the milestone.

The trail covers more than five miles of beautiful coastline and engages with local schools, elder care settings and the wider community; encouraging them to be active and promote health and wellbeing, whilst learning about the local history and enjoying what the area has to offer.

It includes interactive technology to bring the history to life in a fun and engaging way to convey Clacton's story and the town's heritage.

WELCOME TO THE CLACTON HERITAGE TRAIL



THE TRAIL PROVIDES A LASTING LEGACY TO SHARE OUR HERITAGE AND HISTORY



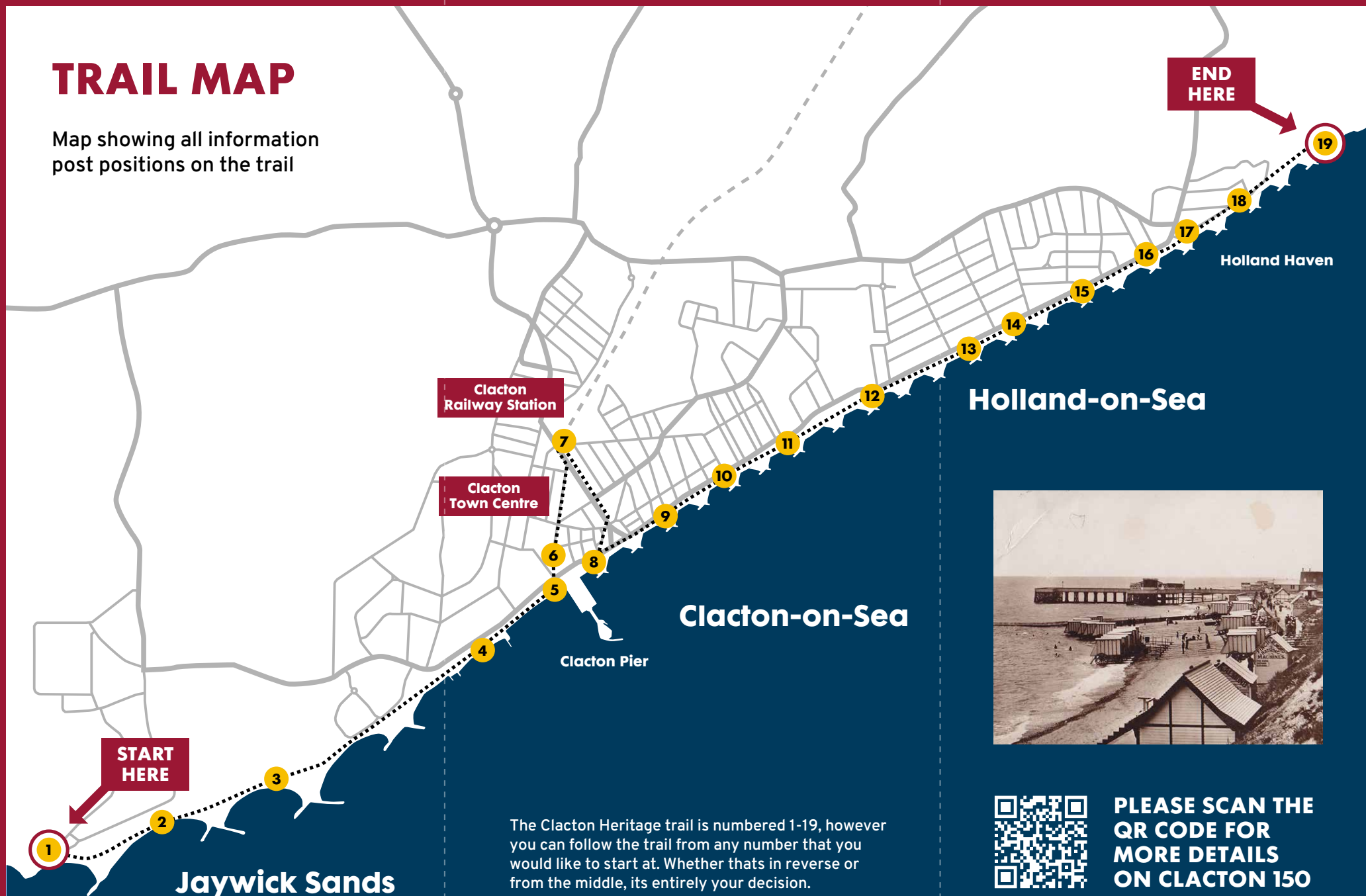
To contact the Clacton 150 project team
please email: clacton150@tendringdc.gov.uk

JAYWICK SANDS TO
HOLLAND HAVEN



TRAIL MAP

Map showing all information
post positions on the trail



The Clacton Heritage trail is numbered 1-19, however you can follow the trail from any number that you would like to start at. Whether thats in reverse or from the middle, its entirely your decision.



**PLEASE SCAN THE
QR CODE FOR
MORE DETAILS
ON CLACTON 150**